



NOA  
RESIDENCE

by

**WB**

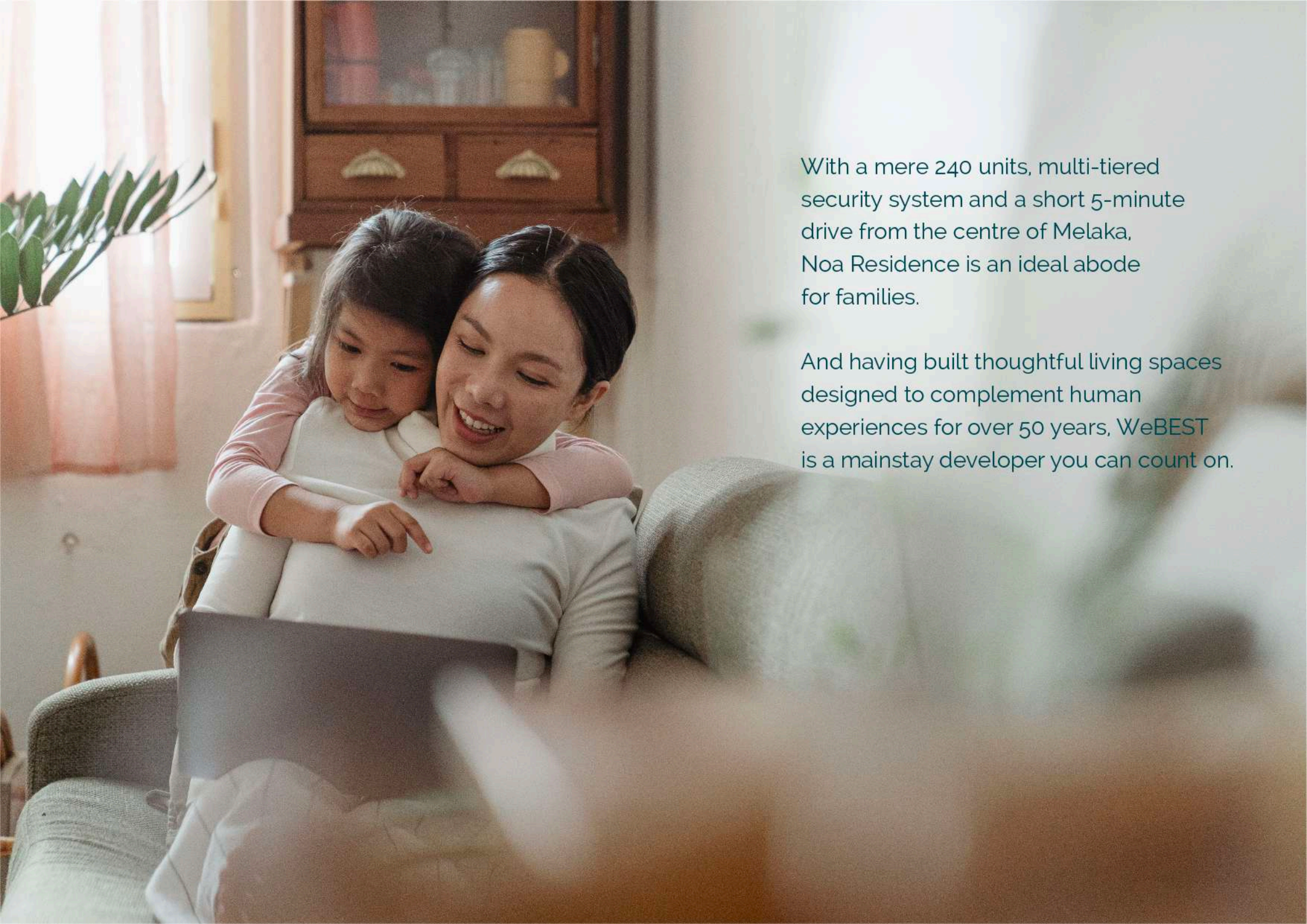
WEBEST SDN BHD

# NOA RESIDENCE

At Noa Residence, home is so much more than just a living space. You'll have a haven to let your dreams embark from, a place to throw an armada of gatherings, and a compass to find your oasis of calm. Here, every day can end just like it started - an ocean away from your worries.







With a mere 240 units, multi-tiered security system and a short 5-minute drive from the centre of Melaka, Noa Residence is an ideal abode for families.

And having built thoughtful living spaces designed to complement human experiences for over 50 years, WeBEST is a mainstay developer you can count on.



#### LAYOUT TYPE

1 L-SHAPE TOWER

240 units

1 FLOOR

15 units 3 lifts

#### CAR PARK

STUDIO

2 car parks

3 BEDROOMS

2-3 car parks

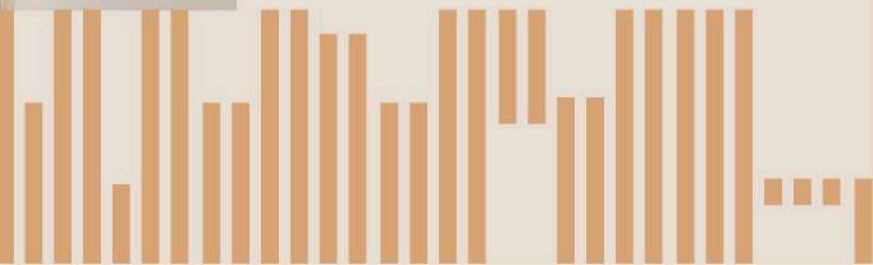
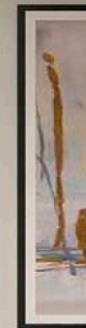
#### TOTAL UNITS

STUDIO

495 sqft

3 BEDROOMS

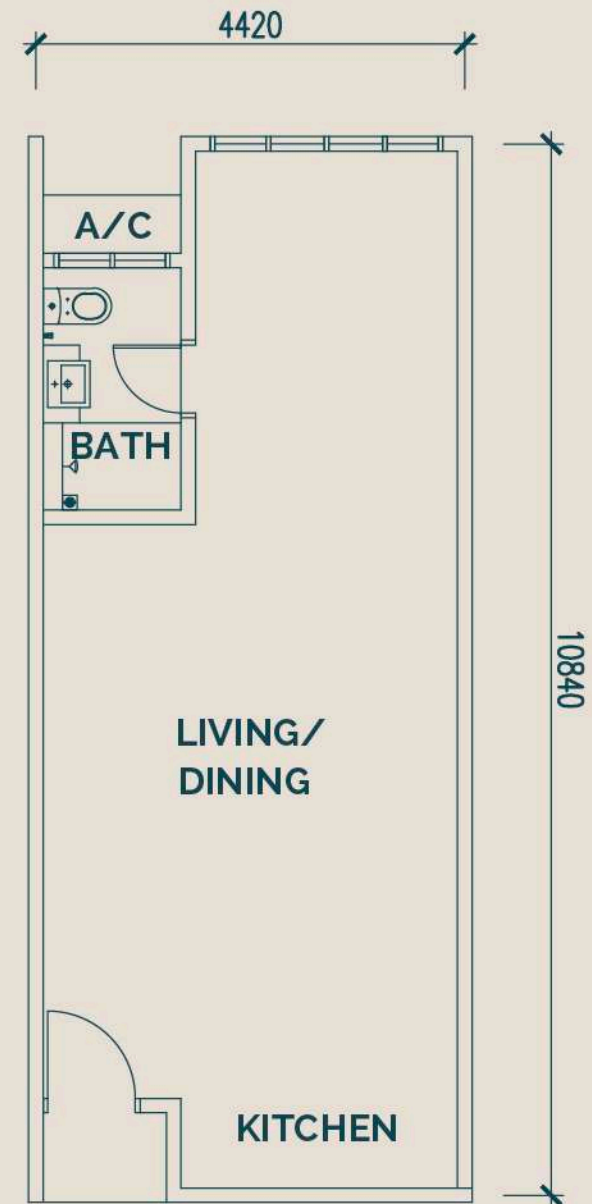
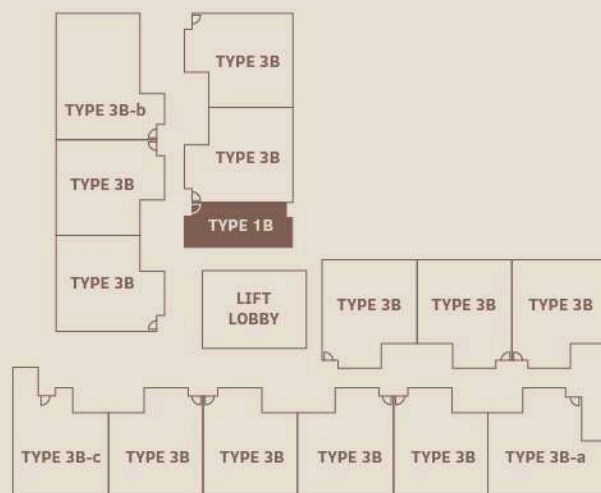
1011 sqft to 1280 sqft



# TYPE 1B

495 sqft / 46 m<sup>2</sup>

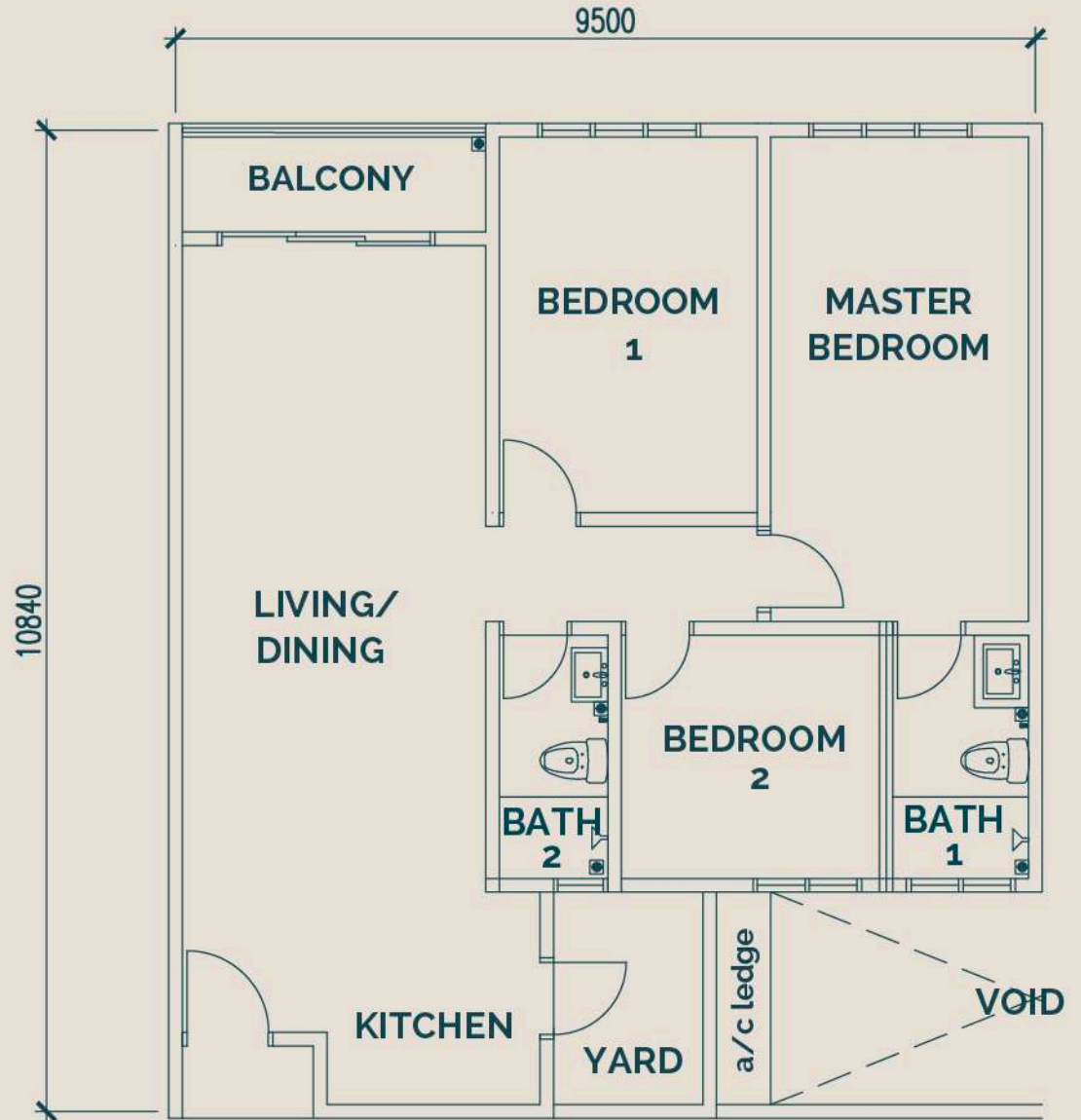
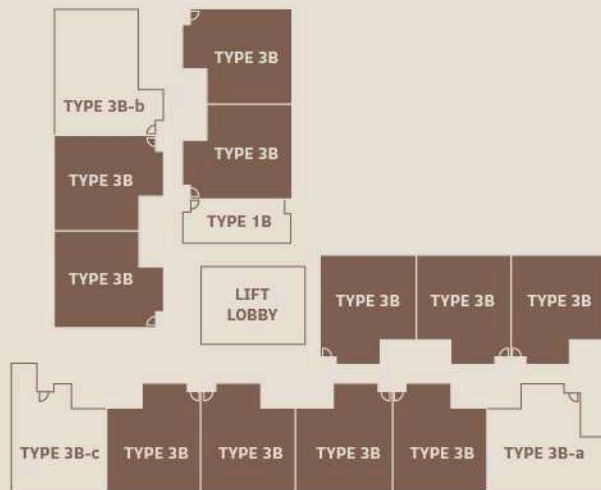
Studio  
2 car parks



# TYPE 3B

1011 sqft / 94 m<sup>2</sup>

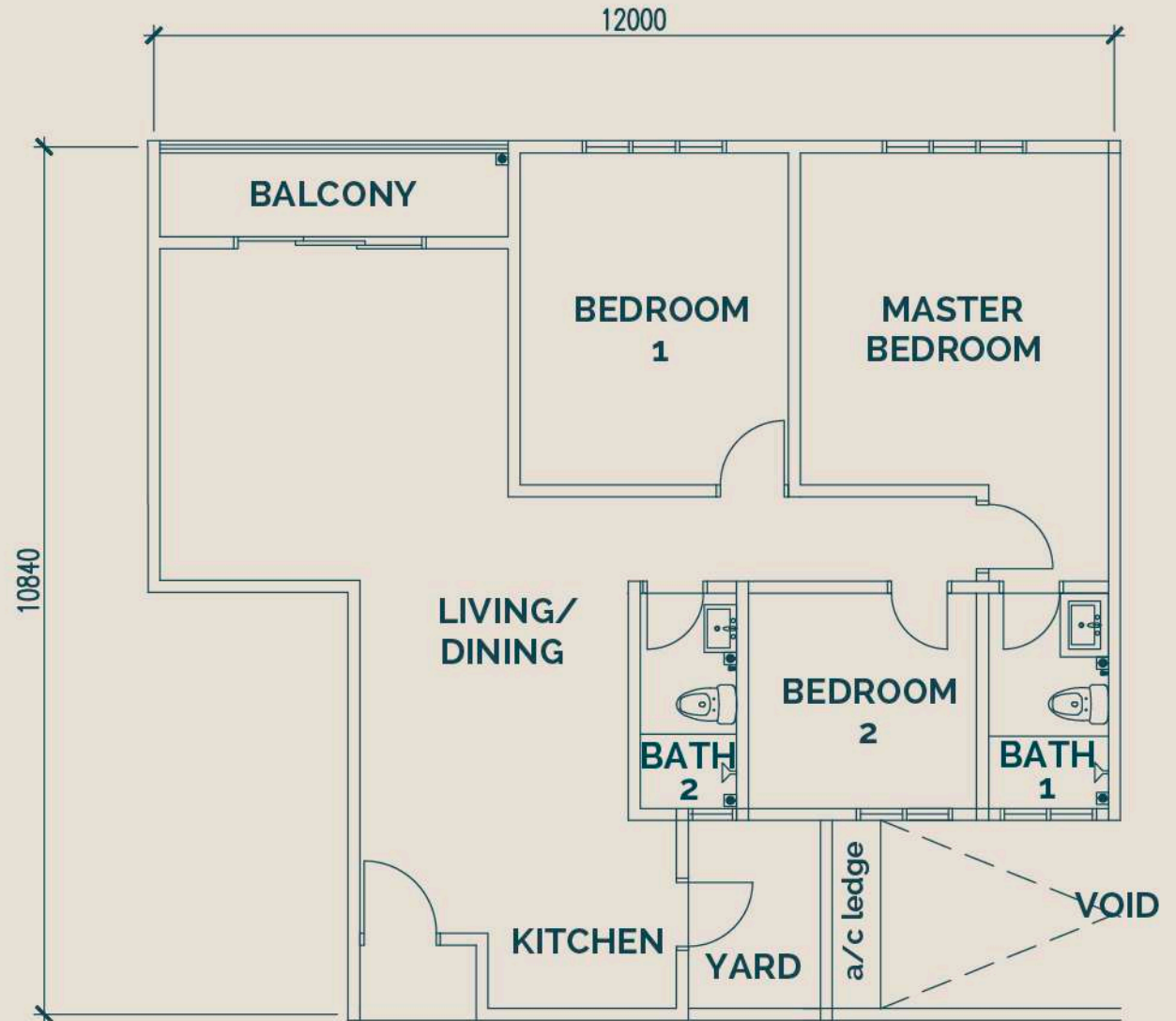
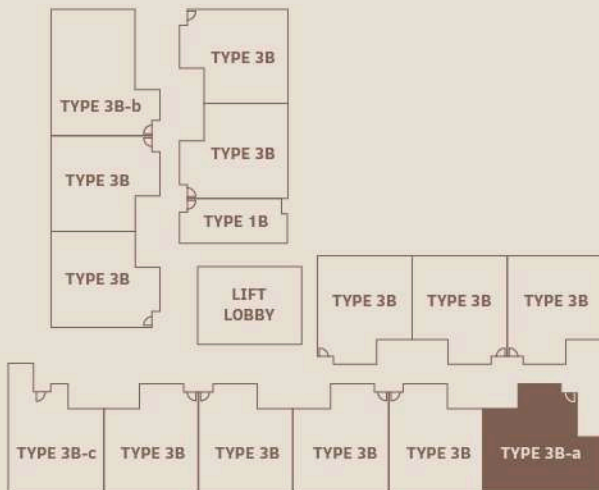
3 bedrooms  
2 bathrooms  
2 car parks



# TYPE 3B-a

1152 sqft / 107 m<sup>2</sup>

- 3 bedrooms
- 2 bathrooms
- 2-3 car parks

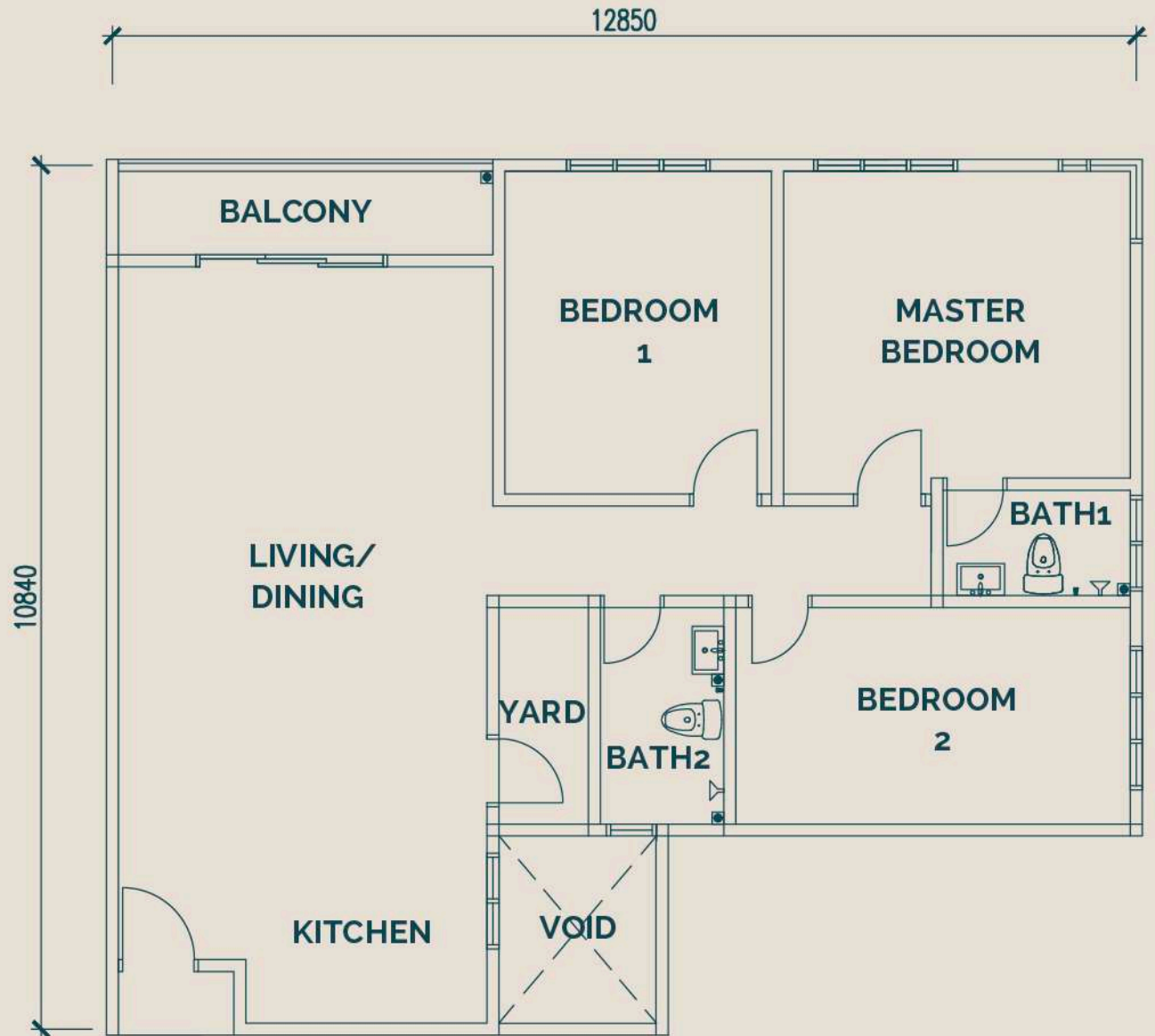
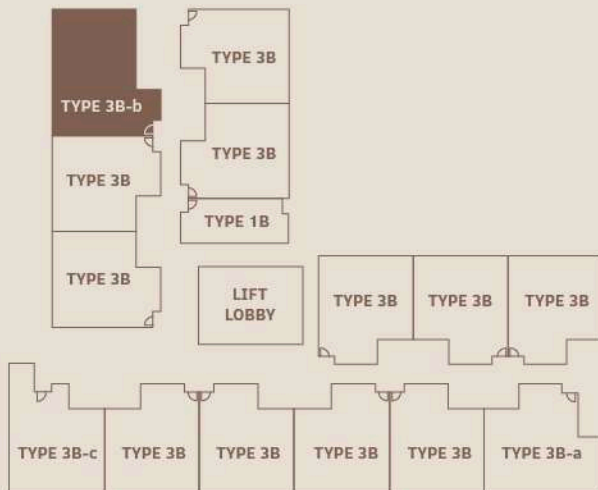




# TYPE 3B-b

1,280 sqft / 119 m<sup>2</sup>

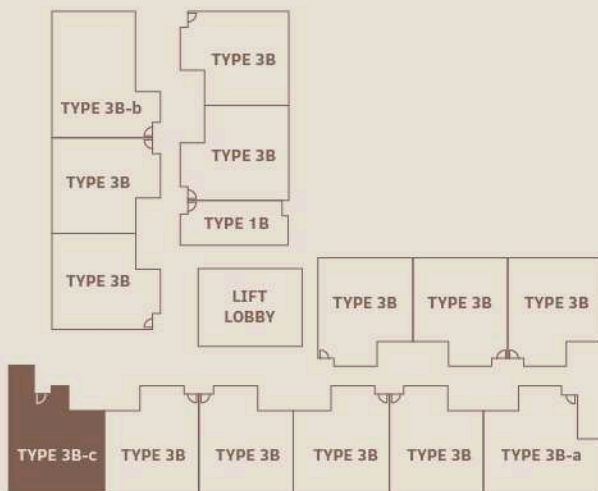
- 3 bedrooms
- 2 bathrooms
- 3 car parks

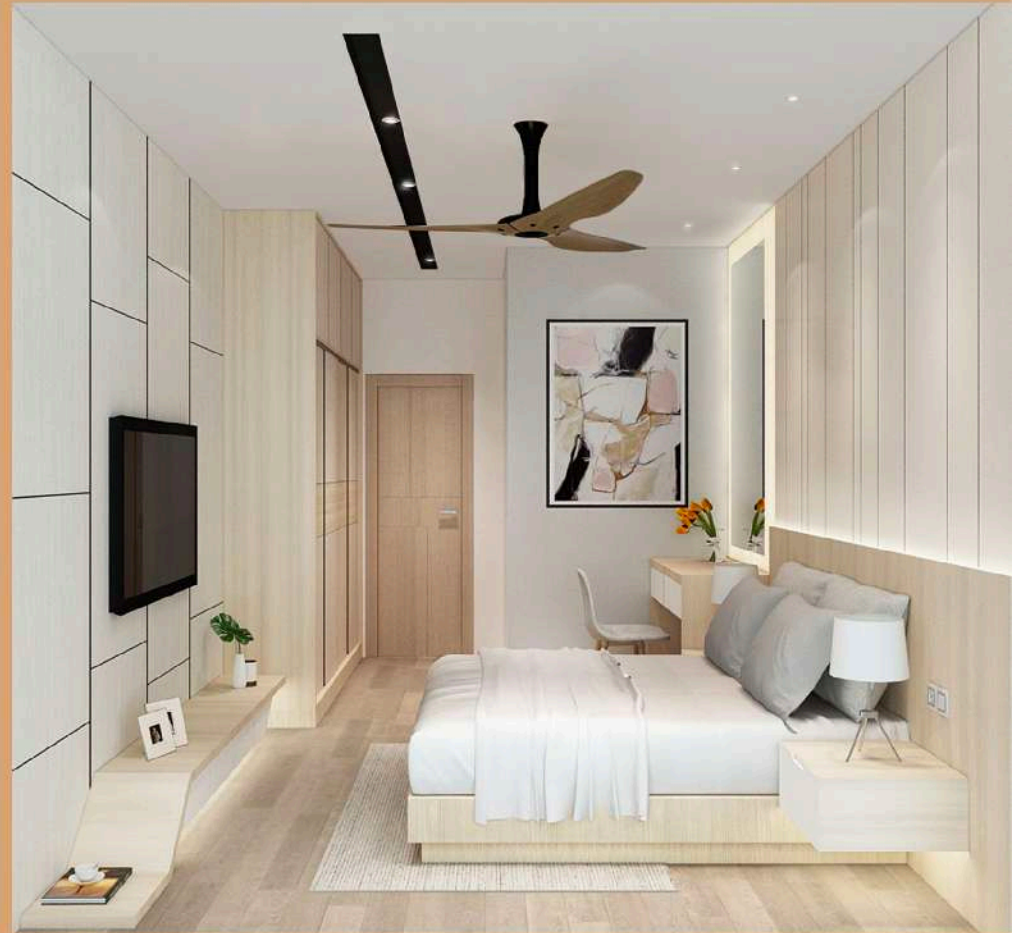


# TYPE 3B-C

1,066 sqft / 99 m<sup>2</sup>

- 3 bedrooms
- 2 bathrooms
- 2 car parks

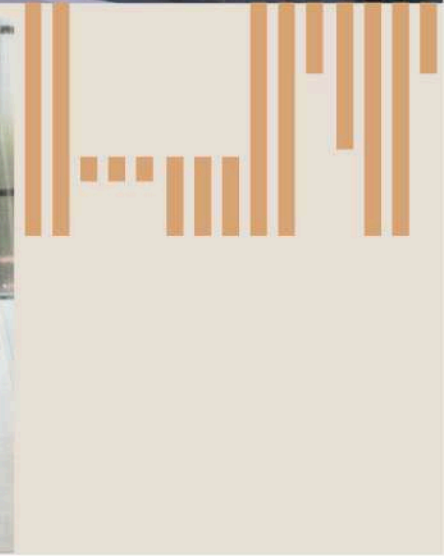
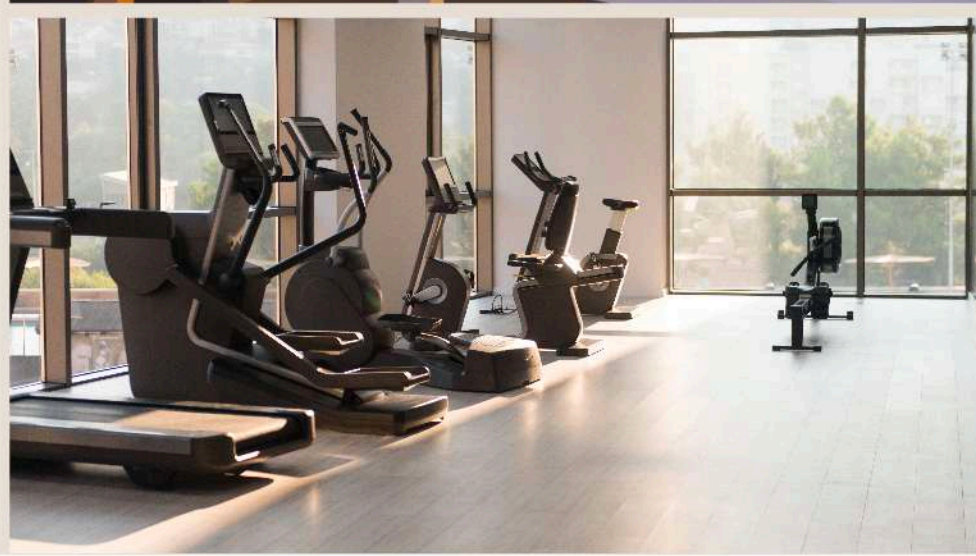




End each day in an oasis of calm.

## Utilities

- Drop-off pavilion
- Lobby area
- Children's playground
- Infinity pool with deck
- Kids pool
- Garden chill-out zone
- BBQ pavilion
- Function rooms
- Surau
- Changing room
- Sky gym
- Reading corner
- Function hall
- Sky garden





- A** Lebu AMJ
- B** Commercial Hub
- C** Guard house
- D** Lift Lobby
- E** Infinity Pool
- F** Kids Pool
- G** Relaxation Corner
- H** Yoga Deck
- I** BBQ area
- J** Kids playground
- K** Function Room
- L** Sky Gym
- M** Management Office

## Outstanding and strategic location



Prime location along Lebu AMJ, great accessibility to Lebu SPA



2 mins to McDonald's and Family Mart



5-10 mins to Tesco and AEON mall



5 mins to SJK (C) Malim and SJK (C) Cheng



10 mins to Oriental Hospital



15 mins to Jonker Street Night Market



15 mins to Batu Berendam International Airport



20 mins to MMU





NOA  
RESIDENCE

REGISTER NOW

0164195115 (developer hotline) | 062921300 (developer office)

[www.webest.my](http://www.webest.my) | [info@webest.my](mailto:info@webest.my)

NO 8F JALAN LAKSAMANA CHENG HO 75000 MELAKA

No. Lesen Perumahan : 8746/03-204/0192(A) Tempoh Sah : 04/03/2022 hingga 03/03/2024; No Permit Iklan & Jualan : 8746-08/08-2025/0118(N)-(S) Tempoh sah : 16/08/2022 hingga 15/08/2025 Pihak berkuasa yang meluluskan : Majlis Bandaraya Melaka Bersejarah No. Kelulusan Pihak Berkuasa : MBMB/JKB.03009/03/2020 Tarikh Projek di Jangka Siap : May 2025 Pegangan Tanah: bebas Bebanan Tanah : Malayan Banking Berhad

**WB**  
WEBEST SDN BHD